

2025 Impact Snapshot: A Report to the Community

Early Childhood Education

492

Children increased their readiness for school success in our center-based and family child care homes.

Children receiving screenings



1 out of 5 children had an identified special need.



Early Childhood Education Partnerships

Direct Services

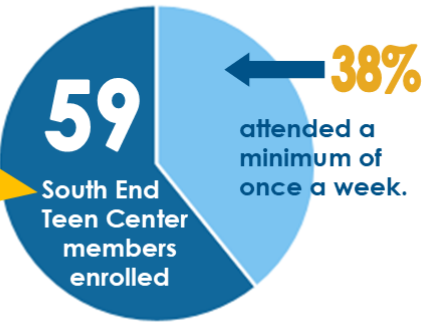
- 3 School Districts:
 - Waterville
 - MSAD #54
 - RSU #19
- 3 family child care homes
- 6 child care centers

Educare Central Maine's Lab School & Learning Hub reaches hundreds of educator professionals through training, technical assistance, and via conference presentations.

Youth Programs

"At the South End Teen Center, I belong and I feel safe."

-SETC member



For Families

524

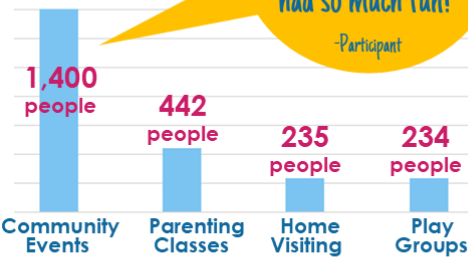
Families received coaching on goal setting, focusing on housing, education, employment, basic needs, and financial stability.

More than 9,000 families received direct supports to help meet their basic needs, including housing, hygiene, food, clothing, transportation, medical items, and more!

267,000 Diapers provided to families in need, keeping babies healthier!



Parent Supports & Events



"I went to the Community Baby Shower and we had so much fun!"

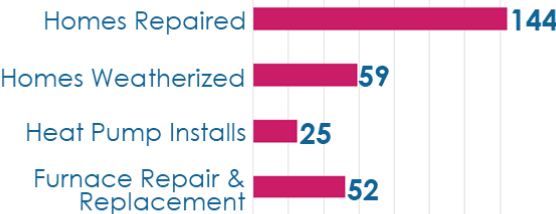
-Participant

All SETC members advanced to the next grade.

- 19 achieved honor roll!
- 4 teen members got a job!
- 2 obtained their driver's permit!
- 35 did community service!

For the Home

of Households Served



This program really helped keep my pipes from freezing last winter.

-HEAP client

6,558

Households were warmer this winter because of our Fuel Assistance programs.

365 people successfully completed a homebuyer education program.

39 households worked with a housing counselor on creating a budget and improving credit scores.

Real Estate Development

KVCAP renovated 2 affordable single-family homes in Waterville. One sold in April and the second is currently on the market.

Cony Village in Augusta was completed with the construction of the final 2 single-family homes and 3 condominiums. This vibrant neighborhood, offers 32 affordable homes and 9 condos.



KVCAP began construction of a 37-unit affordable apartment complex on King Street in Waterville.

We purchased Fairfield Primary School, with plans to develop 31 affordable apartments in 2027.

Transportation

KVCAP's public transit system provided 17,856 rides, bringing people to work, shopping, and other destinations in Kennebec & Somerset counties.

KVCAP Drivers and Staff are the best because they consistently go above and beyond. I'm so grateful for their services.

-Public Transit rider

246,294 rides were provided, bringing people to health and social service appointments.

We drove passengers more than 5.2 million miles! That equals over 15,000 trips from Fort Kent to Kittery!

Economic Impacts

KVCAP paid over \$42,175,000 in expenses in FY2025. The majority of those dollars went into our local economy through our payroll, vendor payments, and direct client supports.



KVCAP employs 325 people.

Our monthly payroll is \$1,275,000. These dollars are spent in communities throughout Central Maine, supporting the local economy.



KENNEBEC VALLEY COMMUNITY ACTION PROGRAM

All KVCAP services: 207-859-1500 or 1-800-542-8227

South End Teen Center: 207-873-5621

Educare Central Maine: 207-680-7200

www.kvcap.org

info@kvcap.org



facebook.com/KVCAP



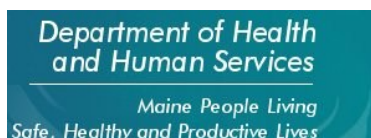
instagram.com/kvcap



linkedin.com/company/kennebec-valley-community-action-program



COMMUNITY
PARTNER



2025 IMPACT REPORT

Helping People, Changing Lives since 1965